



# Cytokeratin 13 (ABT-CK13) mouse mAb

|                           |  |
|---------------------------|--|
| <b>Catalog No</b>         | YP-Ab-15252  |
| <b>Isotype</b>            | IgG  |
| <b>Reactivity</b>         | Human  |
| <b>Applications</b>       | IHC, WB  |
| <b>Gene Name</b>          | KRT13  |
| <b>Protein Name</b>       | Keratin, type I cytoskeletal 13 (Cytokeratin-13) (CK-13) (Keratin-13) (K13)  |
| <b>Immunogen</b>          | Synthesized peptide derived from human Cytokeratin 13  |
| <b>Specificity</b>        | This antibody detects endogenous levels of human Cytokeratin 13. Heat-induced epitope retrieval (HIER) Citrate buffer of pH6.0 was highly recommended as antigen repair method in paraffin section   |
| <b>Formulation</b>        | Liquid in PBS containing 50% glycerol, 0.5% BSA and 0.02% sodium azide.  |
| <b>Source</b>             | Mouse, Monoclonal/IgG1, Kappa  |
| <b>Purification</b>       | The antibody was affinity-purified from mouse ascites by affinity-chromatography using specific immunogen.   |
| <b>Dilution</b>           | IHC-p 1:100-500, WB 1:500-2000   |
| <b>Concentration</b>      | 1 mg/ml  |
| <b>Purity</b>             | ≥90%   |
| <b>Storage Stability</b>  | -20°C/1 year   |
| <b>Synonyms</b>           |  |
| <b>Observed Band</b>      |  |
| <b>Cell Pathway</b>       | Cytoplasmic, Membranous  |
| <b>Tissue Specificity</b> | Expressed in some epidermal sweat gland ducts (at protein level) and in exocervix, esophagus and placenta.   |
| <b>Function</b>           | disease:Defects in KRT13 are a cause of white sponge nevus of cannon (WSN) [MIM:193900]. WSN is a rare autosomal dominant disorder which predominantly affects non-cornified stratified squamous epithelia. Clinically, it is characterized by the presence of soft, white, and spongy plaques in the oral mucosa. The characteristic histopathologic features are epithelial thickening, parakeratosis, and vacuolization of the suprabasal layer of oral epithelial keratinocytes. Less frequently the mucous membranes of the nose, esophagus, genitalia and rectum are involved.,miscellaneous:There are two types of cytoskeletal and microfibrillar keratin: I (acidic; 40-55 kDa) and II (neutral to basic; 56-70 kDa).,online information:Keratin-13 entry,PTM:O-glycosylated; glycans consist of single N-acetylglucosamine residues.,similarity:Belongs to the intermediate filament family.,subunit:Heterotetramer of two |
| <b>Background</b>         | The protein encoded by this gene is a member of the keratin gene family. The keratins are intermediate filament proteins responsible for the structural integrity  |



of epithelial cells and are subdivided into cytokeratins and hair keratins. Most of the type I cytokeratins consist of acidic proteins which are arranged in pairs of heterotypic keratin chains. This type I cytokeratin is paired with keratin 4 and expressed in the suprabasal layers of non-cornified stratified epithelia. Mutations in this gene and keratin 4 have been associated with the autosomal dominant disorder White Sponge Nevus. The type I cytokeratins are clustered in a region of chromosome 17q21.2. Alternative splicing of this gene results in multiple transcript variants; however, not all variants have been described. [provided by RefSeq, Jul 2008],

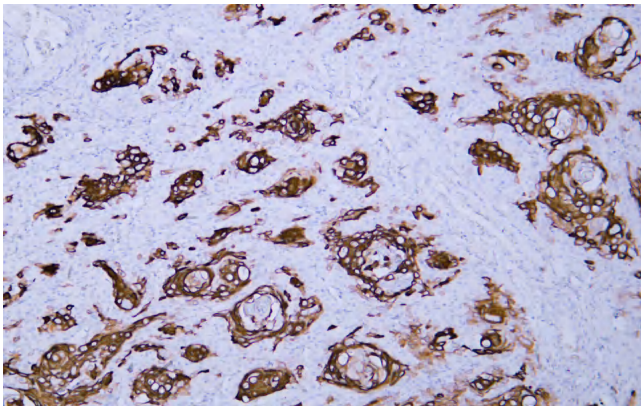
**matters needing attention**

Avoid repeated freezing and thawing!

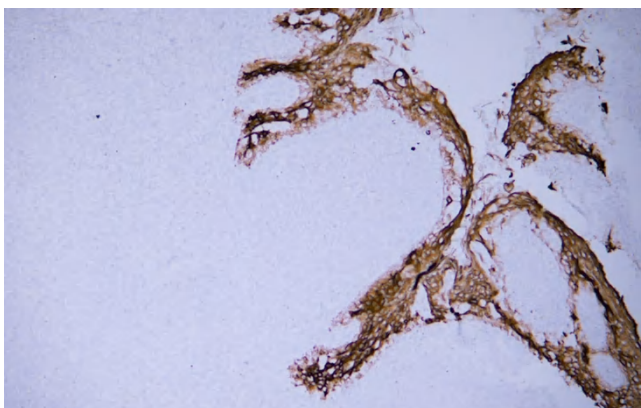
**Usage suggestions**

This product can be used in immunological reaction related experiments. For more information, please consult technical personnel.

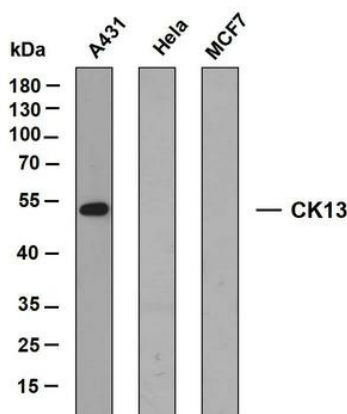
**Products Images**



Human cervical squamous cell carcinoma tissue was stained with Anti-Cytokeratin 13 (ABT-CK13) Antibody



Human tonsil tissue was stained with Anti-Cytokeratin 13 (ABT-CK13) Antibody



Various whole cell lysates were separated by 10% SDS-PAGE, and the membrane was blotted with anti-Cytokeratin 13 antibody. The HRP-conjugated anti-Mouse IgG antibody was used to detect the antibody. Predicted band size: 50 kDa